

# Mechanically Jointed Rodless Cylinder Basic Type

## 25A-MY1B Series

∅16, ∅20, ∅25, ∅32, ∅40, ∅50, ∅63

RoHS



### How to Order

∅16, ∅20, ∅50, ∅63    **25A-MY1B20** [ ] [ ] - **300** [ ] - **M9BW** [ ]

∅25, ∅32, ∅40    **25A-MY1B25** [ ] [ ] - **300** [ ] **Z** - **M9BW** [ ]

**Series compatible with secondary batteries**

**Basic type**

**Bore size**

16	16 mm
20	20 mm
25	25 mm
32	32 mm
40	40 mm
50	50 mm
63	63 mm

**Port thread type**

Symbol	Type	Bore size
Nil	M5	∅16, ∅20
	Rc	
TN	NPT	∅25, ∅32, ∅40
TF	G	∅50, ∅63

**Piping**

Nil	Standard type
G	Centralized piping type

**Number of auto switches**

Nil	2
S	1
n	n

**Auto switch**

Nil	Without auto switch (Built-in magnet)
-----	---------------------------------------

\* Applicable auto switches vary depending on the bore size.  
\* [Click here](#) for details on applicable auto switch models.

**Cylinder stroke [mm]**

Bore size	Standard stroke*	Long stroke	Maximum manufacturable stroke
16	100, 200, 300, 400, 500, 600, 700, 800, 900, 1000, 1200, 1400, 1600, 1800, 2000	Strokes of 2001 to 3000 mm (1 mm increments) exceeding the standard stroke	3000
20, 25, 32, 40, 50, 63	* The stroke can be manufactured in 1 mm increments from 1 mm stroke.	Strokes of 2001 to 5000 mm (1 mm increments) exceeding the standard stroke	5000

Ordering example

\* Long stroke can be ordered the same as the standard stroke. 25A-MY1B20-3000L-M9BW

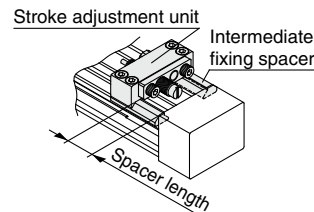
\* Please be advised that with a stroke of 49 mm or less, there are cases where auto switch mounting is not possible, and the performance of the air cushion may decline.

For ∅16 to ∅40

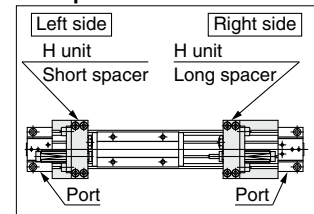
### Stroke adjustment unit symbol

		Right side stroke adjustment unit									
		Without unit	A: With adjustment bolt			L: With low load shock absorber + Adjustment bolt			H: With high load shock absorber + Adjustment bolt		
			With short spacer	With long spacer	With short spacer	With long spacer	With short spacer	With long spacer	With short spacer	With long spacer	
Left side stroke adjustment unit	Without unit	Nil	SA	SA6	SA7	SL	SL6	SL7	SH	SH6	SH7
	A: With adjustment bolt	AS	A	AA6	AA7	AL	AL6	AL7	AH	AH6	AH7
	With short spacer	A6S	A6A	A6	A6A7	A6L	A6L6	A6L7	A6H	A6H6	A6H7
With long spacer	A7S	A7A	A7A6	A7	A7L	A7L6	A7L7	A7H	A7H6	A7H7	
L: With low load shock absorber + Adjustment bolt	Without unit	LS	LA	LA6	LA7	L	LL6	LL7	LH	LH6	LH7
	With short spacer	L6S	L6A	L6A6	L6A7	L6L	L6	L6L7	L6H	L6H6	L6H7
	With long spacer	L7S	L7A	L7A6	L7A7	L7L	L7L6	L7	L7H	L7H6	L7H7
H: With high load shock absorber + Adjustment bolt	Without unit	HS	HA	HA6	HA7	HL	HL6	HL7	H	HH6	HH7
	With short spacer	H6S	H6A	H6A6	H6A7	H6L	H6L6	H6L7	H6H	H6	H6H7
	With long spacer	H7S	H7A	H7A6	H7A7	H7L	H7L6	H7L7	H7H	H7H6	H7

### Stroke adjustment unit mounting diagram



### Example of H6H7 attachment



\* Spacers are used to fix the stroke adjustment unit at an intermediate stroke position.

\* The 25A-MY1B50 and 63 are not available with the stroke adjustment unit.

\* The stroke adjustment unit H unit is not available for the 25A-MY1B16.

\* The 25A- series specifications and dimensions are the same as those of the standard model. For details, refer to the [Web Catalog](#).

# Mechanically Jointed Rodless Cylinder Slide Bearing Guide Type **25A-MY1M Series** ø16, ø20, ø25, ø32, ø40, ø50, ø63

RoHS



## How to Order

**25A - MY1M 20 [ ] G - 300 [ ] - M9BW [ ]**

Series compatible with secondary batteries

Slide bearing guide type

Bore size

16	16 mm
20	20 mm
25	25 mm
32	32 mm
40	40 mm
50	50 mm
63	63 mm

Port thread type

Symbol	Type	Bore size
Nil	M thread	ø16, ø20
	Rc	ø25, ø32,
TN	NPT	ø40, ø50,
TF	G	ø63

Piping

Nil	Standard type
G	Centralized piping type

Cylinder stroke [mm]

Bore size	Standard stroke*	Long stroke	Maximum manufacturable stroke
16	100, 200, 300, 400, 500, 600, 700, 800, 900, 1000, 1200, 1400, 1600, 1800, 2000	Strokes of 2001 to 3000 mm (1 mm increments) exceeding the standard stroke	3000
20, 25, 32, 40, 50, 63	* The stroke can be manufactured in 1 mm increments from 1 mm stroke.	Strokes of 2001 to 5000 mm (1 mm increments) exceeding the standard stroke	5000

Ordering example

\* Long stroke can be ordered the same as the standard stroke.  
25A-MY1M20-3000L-M9BW

\* Please be advised that with a stroke of 49 mm or less, there are cases where auto switch mounting is not possible, and the performance of the air cushion may decline.

Number of auto switches

Nil	2
S	1
n	n

Auto switch

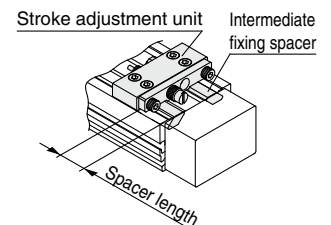
Nil	Without auto switch (Built-in magnet)
-----	---------------------------------------

\* [Click here](#) for details on applicable auto switch models.

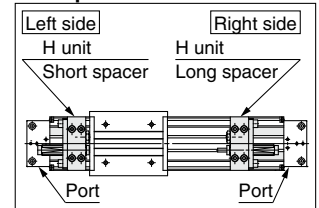
## Stroke adjustment unit symbol

	Right side stroke adjustment unit										
	Without unit	A: With adjustment bolt			L: With low load shock absorber + Adjustment bolt			H: With high load shock absorber + Adjustment bolt			
		With short spacer	With long spacer		With short spacer	With long spacer		With short spacer	With long spacer		
<b>Without unit</b>	Nil	SA	SA6	SA7	SL	SL6	SL7	SH	SH6	SH7	
<b>A: With adjustment bolt</b>	AS	A	AA6	AA7	AL	AL6	AL7	AH	AH6	AH7	
With short spacer	A6S	A6A	A6	A6A7	A6L	A6L6	A6L7	A6H	A6H6	A6H7	
With long spacer	A7S	A7A	A7A6	A7	A7L	A7L6	A7L7	A7H	A7H6	A7H7	
<b>L: With low load shock absorber + Adjustment bolt</b>	LS	LA	LA6	LA7	L	LL6	LL7	LH	LH6	LH7	
With short spacer	L6S	L6A	L6A6	L6A7	L6L	L6	L6L7	L6H	L6H6	L6H7	
With long spacer	L7S	L7A	L7A6	L7A7	L7L	L7L6	L7	L7H	L7H6	L7H7	
<b>H: With high load shock absorber + Adjustment bolt</b>	HS	HA	HA6	HA7	HL	HL6	HL7	H	HH6	HH7	
With short spacer	H6S	H6A	H6A6	H6A7	H6L	H6L6	H6L7	H6H	H6	H6H7	
With long spacer	H7S	H7A	H7A6	H7A7	H7L	H7L6	H7L7	H7H	H7H6	H7	

## Stroke adjustment unit mounting diagram



## Example of H6H7 attachment



\* Spacers are used to fix the stroke adjustment unit at an intermediate stroke position.  
\* Stroke adjustment unit H is not available for 25A-MY1M16.

\* The 25A- series specifications and dimensions are the same as those of the standard model.

For details, refer to the [Web Catalog](#).

# Mechanically Jointed Rodless Cylinder Cam Follower Guide Type

# 25A-MY1C Series

∅16, ∅20, ∅25, ∅32, ∅40, ∅50, ∅63

RoHS



## How to Order

25A - MY1C 25 [ ] [ ] - 300 [ ] - M9BW [ ] - [ ]

Series compatible with secondary batteries

Cam follower guide type

Bore size

16	16 mm
20	20 mm
25	25 mm
32	32 mm
40	40 mm
50	50 mm
63	63 mm

Port thread type

Symbol	Type	Bore size
Nil	M thread	∅16, ∅20
	Rc	∅25, ∅32,
TN	NPT	∅40, ∅50,
TF	G	∅63

Piping

Nil	Standard type
G	Centralized piping type

Cylinder stroke [mm]

Bore size	Standard stroke*	Long stroke	Maximum manufacturable stroke
16	100, 200, 300, 400, 500, 600 700, 800, 900, 1000, 1200 1400, 1600, 1800, 2000	Strokes of 2001 to 3000 mm (1 mm increments) exceeding the standard stroke	3000
20, 25, 32 40, 50, 63	* The stroke can be manufactured in 1 mm increments from 1 mm stroke.	Strokes of 2001 to 5000 mm (1 mm increments) exceeding the standard stroke	5000

Ordering example

\* Long stroke can be ordered the same as the standard stroke. 25A-MY1C20-3000L-M9BW

\* Please be advised that with a stroke of 49 mm or less, there are cases where auto switch mounting is not possible, and the performance of the air cushion may decline.

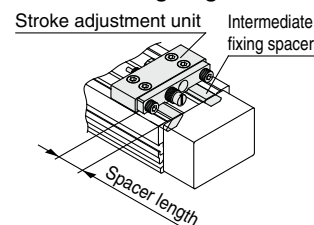
Stroke adjustment unit symbol

		Right side stroke adjustment unit											
		Without unit	A: With adjustment bolt		L: With low load shock absorber + Adjustment bolt		H: With high load shock absorber + Adjustment bolt						
			With short spacer	With long spacer	With short spacer	With long spacer	With short spacer	With long spacer	With short spacer	With long spacer			
Left side stroke adjustment unit	Without unit	Nil	SA	SA6	SA7	SL	SL6	SL7	SH	SH6	SH7		
	A: With adjustment bolt	AS	A	AA6	AA7	AL	AL6	AL7	AH	AH6	AH7		
	With short spacer	A6S	A6A	A6	A6A7	A6L	A6L6	A6L7	A6H	A6H6	A6H7		
	With long spacer	A7S	A7A	A7A6	A7	A7L	A7L6	A7L7	A7H	A7H6	A7H7		
Adjustment bolt	L: With low load shock absorber +	LS	LA	LA6	LA7	L	LL6	LL7	LH	LH6	LH7		
	With short spacer	L6S	L6A	L6A6	L6A7	L6L	L6	L6L7	L6H	L6H6	L6H7		
	With long spacer	L7S	L7A	L7A6	L7A7	L7L	L7L6	L7	L7H	L7H6	L7H7		
Adjustment bolt	H: With high load shock absorber +	HS	HA	HA6	HA7	HL	HL6	HL7	H	HH6	HH7		
	With short spacer	H6S	H6A	H6A6	H6A7	H6L	H6L6	H6L7	H6H	H6	H6H7		
	With long spacer	H7S	H7A	H7A6	H7A7	H7L	H7L6	H7L7	H7H	H7H6	H7		

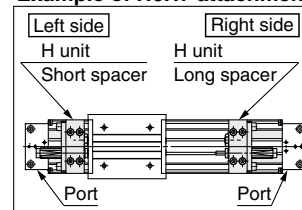
\* Spacers are used to fix the stroke adjustment unit at an intermediate stroke position.

\* Stroke adjustment unit H is not available for 25A-MY1C16.

Stroke adjustment unit mounting diagram



Example of H6H7 attachment



\* The 25A- series specifications and dimensions are the same as those of the standard model.

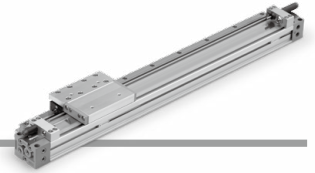
For details, refer to the [Web Catalog](#).

# Mechanically Jointed Rodless Cylinder Linear Guide Type

## 25A-MY1H Series

ø16, ø20, ø25, ø32, ø40

RoHS



### How to Order

**ø16, ø20** 25A-MY1H20 [ ] [ ] - 300 [ ] - M9BW [ ]  
**ø25, ø32, ø40** 25A-MY1H25 [ ] [ ] - 300 [ ] Z - M9BW [ ]

**Series compatible with secondary batteries**  
**Linear guide type**  
**Bore size**  

16	16 mm
20	20 mm
25	25 mm
32	32 mm
40	40 mm

**Port thread type**  

Symbol	Type	Bore size
Nil	M thread	ø16, ø20
	Rc	ø25, ø32, ø40
TN	NPT	
TF	G	

**Piping**  

Nil	Standard type
G	Centralized piping type

**Cylinder stroke [mm]**  

Bore size	Standard stroke	Intermediate stroke	Long stroke	Maximum manufacturable stroke
16, 20	50, 100, 150 200, 250, 300	Strokes of 51 to 599 mm (1 mm increments) other than standard strokes	Strokes of 601 to 1000 mm (1 mm increments) exceeding the standard stroke	1000
	350, 400, 450 500, 550, 600		Strokes of 601 to 1500 mm (1 mm increments) exceeding the standard stroke	
25, 32, 40				1500

**Number of auto switches**  

Nil	2
S	1
n	n

**Auto switch**  

Nil	Without auto switch (Built-in magnet)
-----	--

\* Click here for details on applicable auto switch models.

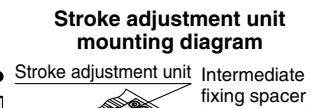
Ordering example

\* Intermediate stroke can be ordered the same as the standard stroke. 25A-MY1H20-60-M9BW

\* Long stroke can be ordered the same as the standard stroke. 25A-MY1H20-800L-M9BW

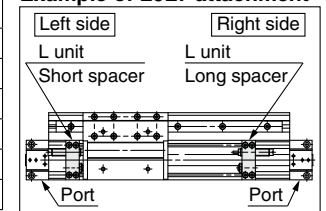
### Stroke adjustment unit symbol

		Right side stroke adjustment unit									
		Without unit	A: With adjustment bolt				L: With low load shock absorber + Adjustment bolt		H: With high load shock absorber + Adjustment bolt		
			With short spacer	With long spacer		With short spacer	With long spacer		With short spacer	With long spacer	
Left side stroke adjustment unit	Without unit	Nil	SA	SA6	SA7	SL	SL6	SL7	SH	SH6	SH7
	A: With adjustment bolt	AS	A	AA6	AA7	AL	AL6	AL7	AH	AH6	AH7
	With short spacer	A6S	A6A	A6	A6A7	A6L	A6L6	A6L7	A6H	A6H6	A6H7
With long spacer	A7S	A7A	A7A6	A7	A7L	A7L6	A7L7	A7H	A7H6	A7H7	
Adjustment bolt	L: With low load shock absorber +	LS	LA	LA6	LA7	L	LL6	LL7	LH	LH6	LH7
	With short spacer	L6S	L6A	L6A6	L6A7	L6L	L6	L6L7	L6H	L6H6	L6H7
	With long spacer	L7S	L7A	L7A6	L7A7	L7L	L7L6	L7	L7H	L7H6	L7H7
Adjustment bolt	H: With high load shock absorber +	HS	HA	HA6	HA7	HL	HL6	HL7	H	HH6	HH7
	With short spacer	H6S	H6A	H6A6	H6A7	H6L	H6L6	H6L7	H6H	H6	H6H7
	With long spacer	H7S	H7A	H7A6	H7A7	H7L	H7L6	H7L7	H7H	H7H6	H7



Place the protruding section on the stroke adjusting unit side.

### Example of L6L7 attachment



\* Spacers are used to fix the stroke adjustment unit at an intermediate stroke position.  
 \* H: With high load shock absorber + Adjustment bolt is not available for 25A-MY1H16.

\* The 25A-series specifications and dimensions are the same as those of the standard model.

For details, refer to the [Web Catalog](#).

# Mechanically Jointed Rodless Cylinder Cam Follower Guide Type

# 25A-MY2C Series

ø16, ø25, ø40



## How to Order

**25A - MY2C 16 G - 300 - M9BW**

Series compatible with secondary batteries

Cam follower guide type

Bore size

16	16 mm
25	25 mm
40	40 mm

Port thread type

Symbol	Type	Bore size
Nil	M thread	ø16
	Rc	
TN	NPT	ø25, ø40
TF	G	

Piping

G	Centralized piping type (Standard)
---	------------------------------------

Cylinder stroke [mm]

Bore size [mm]	Standard stroke [mm]*1	Max. manufacturable stroke [mm]
16	100, 200, 300, 400, 500, 600, 700, 800,	3000
25, 40	900, 1000, 1200, 1400, 1600, 1800, 2000	5000

\*1 Strokes are manufacturable in 1 mm increments, up to the maximum stroke. However, please be advised that with a stroke of 49 mm or less, there are cases where auto switch mounting is not possible, and the performance of the air cushion may decline.

\* Long stroke can be ordered the same as the standard stroke.  
25A-MY2C25G-3000L-M9BW

Stroke adjustment unit symbol

		Right side stroke adjustment unit						
		Without unit	L: With low load shock absorber			H: With high load shock absorber		
Left side stroke adjustment unit	Without unit	Nil	SL	SL6	SL7	SH	SH6	SH7
	L: With low load shock absorber	LS	L	LL6	LL7	LH	LH6	LH7
		With short spacer	L6S	L6L	L6	L6L7	L6H	L6H6
	With long spacer	L7S	L7L	L7L6	L7	L7H	L7H6	L7H7
	H: With high load shock absorber	HS	HL	HL6	HL7	H	HH6	HH7
		With short spacer	H6S	H6L	H6L6	H6L7	H6H	H6H6
With long spacer	H7S	H7L	H7L6	H7L7	H7H	H7H6	H7H7	

\* Spacers are used to fix the stroke adjustment unit at an intermediate stroke position.

Number of auto switches

Nil	2
S	1
n	n

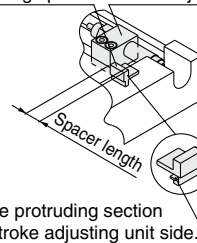
Auto switch

Nil	Without auto switch (Built-in magnet)
-----	---------------------------------------

\* [Click here](#) for details on applicable auto switch models.

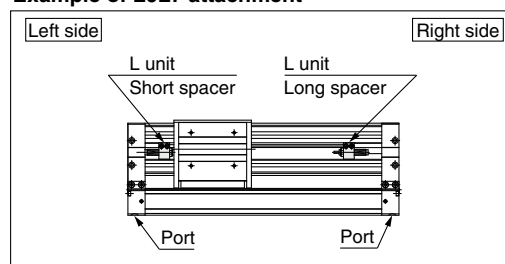
Stroke adjustment unit mounting diagram

Intermediate fixing spacer Stroke adjustment unit



Place the protruding section on the stroke adjusting unit side.

Example of L6L7 attachment



\* The 25A- series specifications and dimensions are the same as those of the standard model.

For details, refer to the [Web Catalog](#).

# Mechanically Jointed Rodless Cylinder Linear Guide Type

# 25A-MY2H/HT Series

ø16, ø25, ø40

RoHS



## How to Order

**25A - MY2 H 16**    **G - 300**    **- M9BW**   

Series compatible  
with secondary  
batteries

Guide type

<b>H</b>	Linear guide, Single axis
<b>HT</b>	Linear guide, Double axis

Bore size

<b>16</b>	16 mm
<b>25</b>	25 mm
<b>40</b>	40 mm

Port thread type

Symbol	Type	Bore size
<b>Nil</b>	M thread	ø16
	Rc	
<b>TN</b>	NPT	ø25, ø40
<b>TF</b>	G	

Piping

<b>G</b>	Centralized piping type (Standard)
----------	------------------------------------

Number of auto  
switches

<b>Nil</b>	2
<b>S</b>	1
<b>n</b>	n

Auto switch

<b>Nil</b>	Without auto switch (Built-in magnet)
------------	--

\* [Click here](#) for details on applicable auto switch models.

Cylinder stroke [mm]

Bore size [mm]	Standard stroke [mm]*1	Max. manufacturable stroke [mm]
<b>16</b>	50, 100, 150, 200, 250, 300, 350, 400, 450, 500, 550, 600	1000
<b>25, 40</b>		1500

\*1 Strokes are manufacturable in 1 mm increments, up to the maximum stroke.

\* Intermediate stroke can be ordered the same as the standard stroke.

**25A-MY2H16G-80-M9BW**

\* Long stroke can be ordered the same as the standard stroke.

**25A-MY2H25G-800L-M9BW**

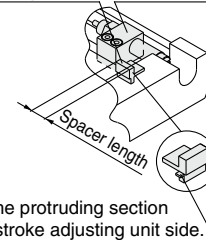
Stroke adjustment unit mounting diagram

Stroke adjustment unit symbol

		Right side stroke adjustment unit						
		Without unit	L: With low load shock absorber			H: With high load shock absorber		
			With short spacer	With long spacer	With short spacer	With long spacer		
Left side stroke adjustment unit	Without unit	Nil	SL	SL6	SL7	SH	SH6	SH7
	L: With low load shock absorber	LS	L	LL6	LL7	LH	LH6	LH7
		With short spacer	L6S	L6L	L6	L6L7	L6H	L6H6
	With long spacer	L7S	L7L	L7L6	L7	L7H	L7H6	L7H7
	H: With high load shock absorber	HS	HL	HL6	HL7	H	HH6	HH7
		With short spacer	H6S	H6L	H6L6	H6L7	H6H	H6
With long spacer	H7S	H7L	H7L6	H7L7	H7H	H7H6	H7	

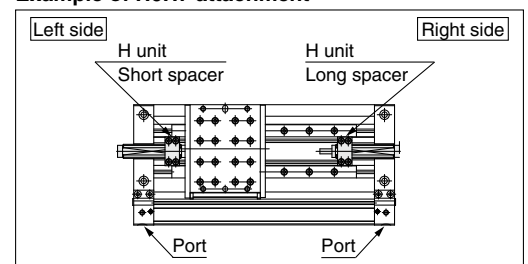
\* Spacers are used to fix the stroke adjustment unit at an intermediate stroke position.

Intermediate fixing spacer Stroke adjustment unit



Place the protruding section on the stroke adjusting unit side.

Example of H6H7 attachment



\* The 25A- series specifications and dimensions are the same as those of the standard model.

For details, refer to the [Web Catalog](#).

# Mechanically Jointed Rodless Cylinder/Basic Type

# 25A-MY3A/3B Series

∅16, ∅20, ∅25, ∅32, ∅40, ∅50, ∅63

RoHS

## How to Order



**25A - MY3 B 16 - 300 - M9BW**

Series compatible with secondary batteries

Type

A	Short type (Rubber bumper)
B	Standard type (Air cushion)

Cylinder bore size

16	16 mm
20	20 mm
25	25 mm
32	32 mm
40	40 mm
50	50 mm
63	63 mm

Port thread type

Symbol	Type	Bore size
Nil	M5	∅16, ∅20
	Rc	
TN	NPT	∅25, ∅32, ∅40
TF	G	∅50, ∅63

Number of auto switches

Nil	2
S	1
n	n

Auto switch

Nil Without auto switch (Built-in magnet)

\* Click here for details on applicable auto switch models.

Cylinder stroke [mm]

Bore size	Standard stroke*	Long stroke	Maximum manufacturable stroke
16, 20, 25, 32, 40, 50, 63	100, 200, 300, 400, 500, 600, 700, 800, 900, 1000, 1200, 1400, 1600, 1800, 2000 * The stroke can be manufactured in 1 mm increments from 1 mm stroke.	Strokes of 2001 to 3000 mm (1 mm increments) exceeding the standard stroke	3000

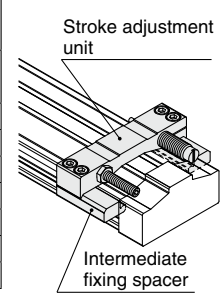
Ordering example

- \* Long stroke can be ordered the same as the standard stroke. 25A-MY3A25-3000L-M9BW
- \* Please be advised that with a stroke of 49 mm or less, there are cases where auto switch mounting is not possible, and the performance of the air cushion may decline.

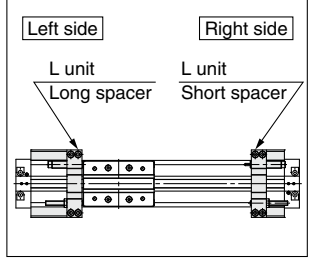
Stroke adjustment unit symbol

Left side stroke adjustment unit		Right side stroke adjustment unit						
		Without unit	L: With low load shock absorber + Adjustment bolt			H: With high load shock absorber + Adjustment bolt		
			With short spacer	With long spacer		With short spacer	With long spacer	
Without unit	Nil	SL	SL6	SL7	SH	SH6	SH7	
L: With low load shock absorber + Adjustment bolt	LS	L	LL6	LL7	LH	LH6	LH7	
With short spacer	L6S	L6L	L6	L6L7	L6H	L6H6	L6H7	
With long spacer	L7S	L7L	L7L6	L7	L7H	L7H6	L7H7	
H: With high load shock absorber + Adjustment bolt	HS	HL	HL6	HL7	H	HH6	HH7	
With short spacer	H6S	H6L	H6L6	H6L7	H6H	H6	H6H7	
With long spacer	H7S	H7L	H7L6	H7L7	H7H	H7H6	H7	

Stroke adjustment unit mounting diagram



Example of L7L6 attachment



\* Spacers are used to fix the stroke adjustment unit at an intermediate stroke position.

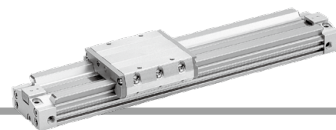
\* The 25A- series specifications and dimensions are the same as those of the standard model. For details, refer to the Web Catalog.

# Mechanically Jointed Rodless Cylinder Slide Bearing Guide Type

RoHS

# 25A-MY3M Series

∅16, ∅25, ∅40, ∅63



## How to Order

**25A-MY3 M 16**    - **300**    - **M9BW**   

Series compatible with secondary batteries

Slide bearing guide type

Cylinder bore size

16	16 mm
25	25 mm
40	40 mm
63	63 mm

Port thread type

Symbol	Type	Bore size
Nil	M5	∅16
	Rc	
TN	NPT	∅25, ∅40, ∅63
TF	G	

Number of auto switches

Nil	2
S	1
n	n

Auto switch

Nil Without auto switch (Built-in magnet)

\* [Click here](#) for details on applicable auto switch models.

Cylinder stroke [mm]

Bore size	Standard stroke*	Long stroke	Maximum manufacturable stroke
16, 25, 40, 63	100, 200, 300, 400, 500, 600, 700, 800, 900, 1000, 1200, 1400, 1600, 1800, 2000 * The stroke can be manufactured in 1 mm increments from 1 mm stroke.	Strokes of 2001 to 3000 mm (1 mm increments) exceeding the standard stroke	3000

Ordering example

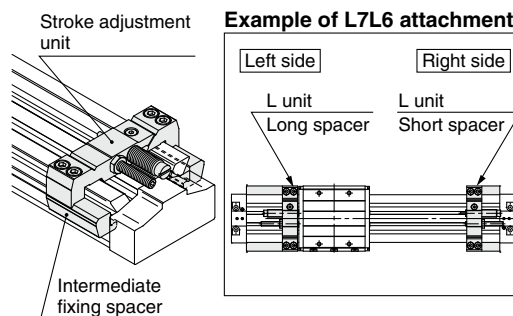
\* Long stroke can be ordered the same as the standard stroke. 25A-MY3M25-3000L-M9BW

\* Please be advised that with a stroke of 49 mm or less, there are cases where auto switch mounting is not possible, and the performance of the air cushion may decline.

Stroke adjustment unit symbol

		Right side stroke adjustment unit						
		Without unit	L: With low load shock absorber + Adjustment bolt			H: With high load shock absorber + Adjustment bolt		
			With short spacer	With long spacer		With short spacer	With long spacer	
Left side stroke adjustment unit	Without unit	Nil	SL	SL6	SL7	SH	SH6	SH7
	L: With low load shock absorber + Adjustment bolt	LS	L	LL6	LL7	LH	LH6	LH7
	With short spacer	L6S	L6L	L6	L6L7	L6H	L6H6	L6H7
	With long spacer	L7S	L7L	L7L6	L7	L7H	L7H6	L7H7
	H: With high load shock absorber + Adjustment bolt	HS	HL	HL6	HL7	H	HH6	HH7
	With short spacer	H6S	H6L	H6L6	H6L7	H6H	H6	H6H7
With long spacer	H7S	H7L	H7L6	H7L7	H7H	H7H6	H7	

Stroke adjustment unit mounting diagram



\* Spacers are used to fix the stroke adjustment unit at an intermediate stroke position.

\* The 25A-series specifications and dimensions are the same as those of the standard model.

For details, refer to the [Web Catalog](#).



# Magnetically Coupled Rodless Cylinder/Basic Type

# 25A-CY3B Series

ø6, ø10, ø15, ø20, ø25, ø32, ø40, ø50, ø63

RoHS

## How to Order



**25A - CY3B 25 [ ] - 300 Z**

Series compatible with secondary batteries

Basic type

Bore size

<b>6</b>	6 mm
<b>10</b>	10 mm
<b>15</b>	15 mm
<b>20</b>	20 mm
<b>25</b>	25 mm
<b>32</b>	32 mm
<b>40</b>	40 mm
<b>50</b>	50 mm
<b>63</b>	63 mm

Port thread type

Symbol	Type	Bore size
<b>Nil</b>	M thread	6, 10, 15
	Rc	20, 25, 32, 40 50, 63
<b>TN</b>	NPT	
<b>TF</b>	G	

Standard stroke [mm]

Bore size	Standard stroke	Manufacturable stroke
<b>6</b>	50, 100, 150, 200	20 to 300
<b>10</b>	50, 100, 150, 200, 250, 300	20 to 500
<b>15</b>	50, 100, 150, 200, 250, 300, 350 400, 450, 500	20 to 1000
<b>20</b>	100, 150, 200, 250, 300, 350 400, 450, 500, 600, 700, 800	25 to 1500
<b>25</b>		25 to 2000
<b>32, 40</b>		
<b>50, 63</b>	100, 150, 200, 250, 300, 350, 400 450, 500, 600, 700, 800, 900, 1000	40 to 2000

- \* Please contact SMC if the maximum stroke is exceeded.
- \* The longer the stroke, the larger the amount of deflection in a cylinder tube. Pay attention to the mounting bracket and clearance value.
- \* Intermediate stroke is available in 1 mm increments.

- \* The 25A- series specifications and dimensions are the same as those of the standard model.

For details, refer to the [Web Catalog](#).



# Magnetically Coupled Rodless Cylinder/Basic Type

# 25A-CY3B Series

ø6, ø10, ø15, ø20, ø25, ø32, ø40, ø50, ø63

RoHS

## How to Order



**25A-CY3B** **25**    - **300**

Series compatible with secondary batteries

Basic type

Bore size

<b>6</b>	6 mm
<b>10</b>	10 mm
<b>15</b>	15 mm
<b>20</b>	20 mm
<b>25</b>	25 mm
<b>32</b>	32 mm
<b>40</b>	40 mm
<b>50</b>	50 mm
<b>63</b>	63 mm

Port thread type

Symbol	Type	Bore size
<b>Nil</b>	M thread	6, 10, 15
	Rc	20, 25, 32, 40 50, 63
<b>TN</b>	NPT	
<b>TF</b>	G	

Standard stroke [mm]

Bore size	Standard stroke	Max. manufacturable stroke
<b>6</b>	50, 100, 150, 200	300
<b>10</b>	50, 100, 150, 200, 250, 300	500
<b>15</b>	50, 100, 150, 200, 250, 300, 350 400, 450, 500	1000
<b>20</b>	100, 150, 200, 250, 300, 350 400, 450, 500, 600, 700, 800	1500
<b>25</b>		2000
<b>32</b>		
<b>40, 50, 63</b>	100, 150, 200, 250, 300, 350, 400 450, 500, 600, 700, 800, 900, 1000	

- \* Please contact SMC if the maximum stroke is exceeded.
- \* The longer the stroke, the larger the amount of deflection in a cylinder tube. Pay attention to the mounting bracket and clearance value.
- \* Intermediate stroke is available in 1 mm increments.

- \* The 25A- series specifications and dimensions are the same as those of the standard model.

For details, refer to the [Web Catalog](#).

# Magnetically Coupled Rodless Cylinder/Direct Mount Type

# 25A-CY3R Series

ø6, ø10, ø15, ø20, ø25, ø32, ø40, ø50, ø63

RoHS

## How to Order



**25A-CY3R**    **25**    - **300**    - **M9BWL**   

Series compatible with secondary batteries

Direct mount type

### Piping type

<b>Nil</b>	Standard type
<b>G</b>	Centralized piping type

\* Type G (centralized piping) is not available for ø6.

### Bore size

<b>6</b>	6 mm
<b>10</b>	10 mm
<b>15</b>	15 mm
<b>20</b>	20 mm
<b>25</b>	25 mm
<b>32</b>	32 mm
<b>40</b>	40 mm
<b>50</b>	50 mm
<b>63</b>	63 mm

### Port thread type

Symbol	Type	Bore size
<b>Nil</b>	M thread	6, 10, 15
	Rc	20, 25, 32, 40, 50, 63
<b>TN</b>	NPT	
<b>TF</b>	G	

### Number of auto switches

<b>Nil</b>	2
<b>S</b>	1
<b>n</b>	n

### Auto switch

<b>Nil</b>	ø6 to ø15	Without auto switch (Built-in magnet)
	ø25 to ø63	
<b>M</b>	ø20	Without auto switch (Built-in magnet for reed switch)
		Without auto switch (Built-in magnet for solid state switch)

\* [Click here](#) for details on applicable auto switch models.

### Switch rail

<b>Nil</b>	With switch rail
<b>N</b>	Without switch rail

\* A type with switch rail has built-in auto switch magnets.

\* ø15 has built-in auto switch magnets even without switch rail.

\* Centralized piping type (G) is not available without switch rail (N).

### Cylinder stroke [mm]

Bore size	Standard stroke	Max. stroke without switch	Max. stroke with switch
<b>6</b>	50, 100, 150, 200	300	300
<b>10</b>	50, 100, 150, 200, 250, 300	500	500
<b>15</b>	50, 100, 150, 200, 250, 300, 350, 400, 450, 500	1000	750
<b>20</b>	100, 150, 200, 250, 300, 350, 400, 450, 500, 600, 700, 800	1500	1000
<b>25</b>			1200
<b>32</b>			
<b>40, 50, 63</b>	100, 150, 200, 250, 300, 350, 400, 450, 500, 600, 700, 800, 900, 1000	2000	1500

\* The longer the stroke, the larger the amount of deflection in a cylinder tube. Pay attention to the mounting bracket and clearance value.

\* Intermediate stroke is available in 1 mm increments.

\* The 25A-series specifications and dimensions are the same as those of the standard model.

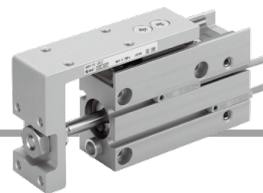
For details, refer to the [Web Catalog](#).

# Compact Slide

# 25A-MXH Series

ø6, ø10, ø16, ø20

RoHS



## How to Order

**25A - MXH 10 - 60 Z - M9BW**  

Series compatible with secondary batteries

Compact slide

Bore size

6	6 mm
10	10 mm
16	16 mm
20	20 mm

Number of auto switches

Nil	2
S	1

Auto switch

Nil	Without auto switch (Built-in magnet)
-----	---------------------------------------

\* [Click here](#) for details on applicable auto switch models.

Cylinder stroke [mm]

6, 10, 16, 20	5, 10, 15, 20, 25, 30, 40 50, 60
---------------	-------------------------------------

\* The 25A- series specifications and dimensions are the same as those of the standard model.

For details, refer to the [Web Catalog](#).

# Air Slide Table

## 25A-MXS Series

ø6, ø8, ø12, ø16, ø20, ø25



### How to Order

Air slide table **25A-MXS** **16** **50** **AS** **M9BW**

Series compatible with secondary batteries

#### Port thread type

Nil	M thread	ø6 to ø16
	Rc	
TN	NPT	ø20, ø25
TF	G	

#### Symmetric type

Nil	Standard type
L	Symmetric type

#### Bore size (Standard stroke [mm])

6	10, 20, 30, 40, 50
8	10, 20, 30, 40, 50, 75
12	10, 20, 30, 40, 50, 75, 100
16	10, 20, 30, 40, 50, 75, 100, 125
20	10, 20, 30, 40, 50, 75, 100, 125, 150
25	10, 20, 30, 40, 50, 75, 100, 125, 150

#### Made to Order

Nil	None
-X2578	Adjuster side mounting type*1

\*1 The type with a shock absorber is only available for bore sizes ø8, ø12, and ø16.

#### Number of auto switches

Nil	2
S	1
n	n

#### Auto switch

Nil	Without auto switch (Built-in magnet)
-----	---------------------------------------

\* [Click here](#) for details on applicable auto switch models.

#### Adjuster option

Nil	Without adjuster
AS	Adjuster on extension end
AT	Adjuster on retraction end
A	Adjuster on both ends
BS	Absorber on extension end
BT	Absorber on retraction end
B	Absorber on both ends
ASBT	Adjuster on extension end + Absorber on retraction end
BSAT	Absorber on extension end + Adjuster on retraction end

\* With shock absorber is not available in the 25A-MXS6 series.

\* When the adjuster option with shock absorber is used, metal-to-metal collisions occur, and may generate dust particles.

\* The 25A-series specifications and dimensions are the same as those of the standard model.

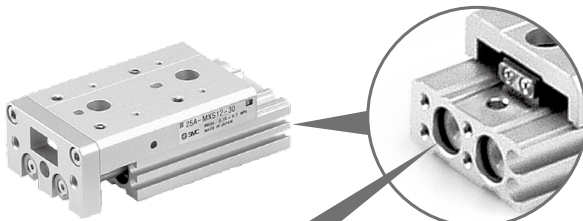
For details, refer to the [Web Catalog](#).

### Corrosion Resistant Air Slide Table

(Made to order: 25A-MXS□-X1949)

The material of the head cap part has been changed to a highly corrosion-resistant material.

Please contact your local sales representative for more details.



	After change	Before change
Head cap	Aluminum	Synthetic resin

# Air Slide Table Double-ported Type



# 25A-MXQ□A Series

∅6, ∅8, ∅12, ∅16, ∅20, ∅25

## How to Order



25A - MXQ **12** **A** - **30** **ZA** □ - **M9BW** □

Series compatible with secondary batteries

1 2 3 4 5 6 7

1 Bore size	2 Body option: Double-ported type		3 Standard stroke [mm]
	A		
6			10, 20, 30, 40, 50
8			10, 20, 30, 40, 50, 75
12			10, 20, 30, 40, 50, 75, 100
16			10, 20, 30, 40, 50, 75, 100, 125
20			10, 20, 30, 40, 50, 75, 100, 125, 150
25			10, 20, 30, 40, 50, 75, 100, 125, 150

### 5 Functional options

Symbol	Functional option
Nil	Without functional option
1	With buffer
2	With end lock
3	Axial piping
4	With buffer, end lock
5	With buffer, axial piping

### 7 Number of auto switches

Symbol	Number of auto switches
Nil	2
S	1
n	n

### 6 Auto switch

Symbol	Auto switch
Nil	Without auto switch (Built-in magnet)

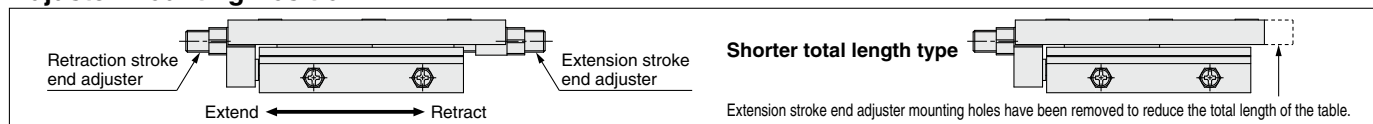
\* [Click here](#) for details on applicable auto switch models.

### 4 Adjuster options/Functional option combinations

Symbol	Adjuster type*6		Adjuster mounting position*1		Functional option combination						
			Extension stroke end	Retraction stroke end	Nil	1	2	3	4	5	
					Without functional option	With buffer*2*7	With end lock	Axial piping*5	With buffer, end lock*2*7	With buffer, axial piping*2*5*7	
Z	Without adjuster				○	○	○	○	○	○	
ZA			●	●	○	×	×	○	×	×	
ZB	Metal stopper with bumper		●		○	×	○	○	×	×	
ZC				●	○	×	×	○	×	×	
ZD	Rubber stopper		●	●	○	×	×	○	×	×	
ZE			●		○	○	○	○	○	○	
ZF				●	○	×	×	○	×	×	
ZG	Shock absorber/RJ		●	●	○	×	×	○	×	×	
ZH			●		○	×	○	○	×	×	
ZJ				●	○	×	×	○	×	×	
ZK	Metal stopper		●	●	○	×	×	○	×	×	
ZL			●		○	○	○	○	○	○	
ZM				●	○	×	×	○	×	×	
ZN					○	○*4	×	○	×	○*4	
ZP	Shorter total length type*3				●	○	×	×	○	×	
ZQ					●	○	×	×	○	×	
ZS					●	○	×	×	○	×	
ZT					●	○	×	×	○	×	
ZBF	Metal stopper with bumper	Retraction stroke end adjuster	●	●	○	×	×	○	×	×	
ZBJ		Without adjuster	●	●	○	×	×	○	×	×	
ZBM	Rubber stopper	Retraction stroke end adjuster	●	●	○	×	×	○	×	×	
ZEC		Without adjuster	●	●	○	×	×	○	×	×	
ZEJ	Shock absorber/RJ	Retraction stroke end adjuster	●	●	○	×	×	○	×	×	
ZEM		Without adjuster	●	●	○	×	×	○	×	×	
ZHC	Metal stopper with bumper	Retraction stroke end adjuster	●	●	○	×	×	○	×	×	
ZHF		Without adjuster	●	●	○	×	×	○	×	×	
ZHM	Rubber stopper	Retraction stroke end adjuster	●	●	○	×	×	○	×	×	
ZLJ		Without adjuster	●	●	○	×	×	○	×	×	

- \*1 ●: Shipped together with the product, but not assembled. Without any symbol for the adjuster mounting position: The adjuster can be mounted afterward.
- \*2 For the buffer mechanism, the buffer stroke will be shorter for the stroke that is adjusted by the extension stroke end adjuster.
- \*3 Extension stroke end adjuster mounting holes have been removed to reduce the total length of the table.
- \*4 The shorter total length type can be used, but a retraction stroke end adjuster cannot be mounted afterward.
- \*5 There is no piping port on the side surface of the product.
- \*6 The metal stopper with bumper option is not available for ∅6.
- \*7 As there is no magnet in the buffer mechanism, auto switches cannot be used on the buffer part.

### Adjuster Mounting Position



- \* When the shock absorber, metal stopper with bumper, or adjuster option with metal stopper is used, metal-to-metal collisions occur, and may generate dust particles.
- \* When the buffer mechanism or the end lock mechanism functional options are used, dust particles may be generated by the buffer part as well as the end lock part.

\* The 25A- series specifications and dimensions are the same as those of the standard model. For details, refer to the [Web Catalog](#).

# Air Slide Table

## Low Thrust with High Rigidity Type

RoHS

# 25A-MXQ□B Series

∅6, ∅8, ∅12, ∅16, ∅20

### How to Order



25A - MXQ **12** **B** - **30** **ZA** - **M9BW** **□**

• Series compatible with secondary batteries

① Bore size	② Body option		③ Standard stroke [mm]
	Standard type B	Symmetric type BL	
6			10, 20, 30, 40, 50, 75
8			10, 20, 30, 40, 50, 75, 100
12			10, 20, 30, 40, 50, 75, 100, 125
16		—*1	10, 20, 30, 40, 50, 75, 100, 125, 150
20			10, 20, 30, 40, 50, 75, 100, 125, 150

\*1 Not available, as the standard model has piping ports and auto switch mounting grooves on both sides. Please use the standard type.

#### ④ Adjuster options

Symbol	Adjuster type*3	Adjuster mounting position*1	
		Extension stroke end	Retraction stroke end
Z	Without adjuster		
ZA	Metal stopper with bumper	●	●
ZB		●	
ZC			●
ZD	Rubber stopper	●	●
ZE		●	
ZF			●
ZG	Shock absorber/RJ	●	●
ZH		●	
ZJ			●
ZK	Metal stopper	●	●
ZL		●	
ZM			●
ZN	Shorter total length type*2	Without adjuster	
ZP		Rubber stopper	●
ZQ		Shock absorber/RJ	●
ZS		Metal stopper with bumper	●
ZT		Metal stopper	●
ZBF	Metal stopper with bumper	Retraction stroke end adjuster	●
ZBJ		Shock absorber/RJ	●
ZBM	Rubber stopper	Metal stopper	●
ZEC		Metal stopper with bumper	●
ZEJ	Shock absorber/RJ	Shock absorber/RJ	●
ZEM		Metal stopper	●
ZHC	Metal stopper with bumper	Metal stopper with bumper	●
ZHF		Rubber stopper	●
ZHM	Metal stopper	Metal stopper	●
ZLC		Metal stopper with bumper	●
ZLF	Metal stopper	Rubber stopper	●
ZLJ		Shock absorber/RJ	●

#### ⑤ Auto switch

**Nil** Without auto switch (Built-in magnet)

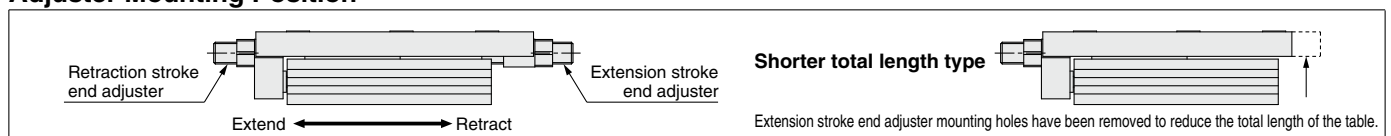
\* [Click here](#) for details on applicable auto switch models.

#### ⑥ Number of auto switches

<b>Nil</b>	2
<b>S</b>	1
<b>n</b>	n

- \*1 ●: Shipped together with the product, but not assembled  
Without any symbol for the adjuster mounting position: The adjuster can be mounted afterward.
- \*2 Extension stroke end adjuster mounting holes have been removed to reduce the total length of the table.
- \*3 The metal stopper with bumper option is not available for ∅6.

### Adjuster Mounting Position



- \* When the shock absorber, metal stopper with bumper, or adjuster option with metal stopper is used, metal-to-metal collisions occur, and may generate dust particles.
- \* The 25A- series specifications and dimensions are the same as those of the standard model. **For details, refer to the [Web Catalog](#).**



# Air Slide Table

## Single Side-ported Type

# 25A-MXQ□C Series

ø8, ø12

RoHS

### How to Order

25A - MXQ **12** **C** - **30** **ZA** □ - **M9BW** □

Series compatible with secondary batteries

1 2 3 4 5 6 7



1 Bore size	2 Body option		3 Standard stroke [mm]
	Standard type C	Symmetric type CL	
8	Port Switch mounting groove	Switch mounting groove Port	10, 20, 30, 40, 50, 75
12	Port Switch mounting groove	Switch mounting groove Port	10, 20, 30, 40, 50, 75, 100

5 Functional options	
Symbol	Functional option
Nil	Without functional option
1	With buffer
2	With end lock
3	Axial piping
4	With buffer, end lock
5	With buffer, axial piping

6 Auto switch	
Symbol	Auto switch
Nil	Without auto switch (Built-in magnet)

\* [Click here](#) for details on applicable auto switch models.

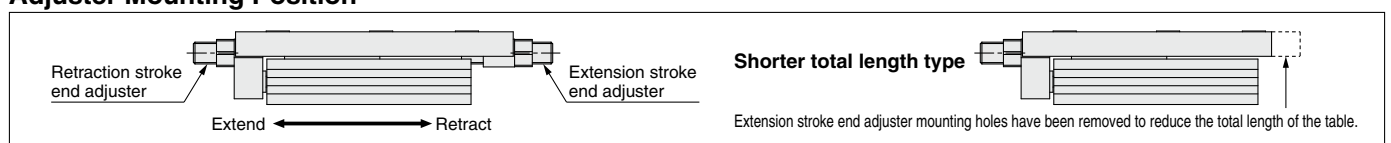
7 Number of auto switches	
Symbol	Number of auto switches
Nil	2
S	1
n	n

#### 4 Adjuster options/Functional option combinations

Symbol	Adjuster type		Adjuster mounting position*1		Functional option combination					
					Nil	1	2	3	4	5
			Extension stroke end	Retraction stroke end	Without functional option	*2*6 With buffer	With end lock	Axial piping*5	*2*6 With buffer, end lock	*3*5*6 With buffer, axial piping
Z	Without adjuster				○	○	○	○	○	○
ZA	Metal stopper with bumper		●	●	○	×	×	○	×	×
ZB	Metal stopper with bumper		●	●	○	×	○	○	×	×
ZC	Metal stopper with bumper			●	○	×	×	○	×	×
ZD	Rubber stopper		●	●	○	×	×	○	×	×
ZE	Rubber stopper		●	●	○	○	○	○	○	○
ZF	Rubber stopper			●	○	×	×	○	×	×
ZG	Shock absorber/RJ		●	●	○	×	×	○	×	×
ZH	Shock absorber/RJ		●	●	○	×	○	○	×	×
ZJ	Shock absorber/RJ			●	○	×	×	○	×	×
ZK	Metal stopper		●	●	○	×	×	○	×	×
ZL	Metal stopper		●	●	○	○	○	○	○	○
ZM	Metal stopper			●	○	×	×	○	×	×
ZN	Shorter overall length type*3				○	○*4	×	○	×	○*4
ZP	Shorter overall length type*3				○	×	×	○	×	×
ZQ	Shorter overall length type*3				○	×	×	○	×	×
ZR	Shorter overall length type*3				○	×	×	○	×	×
ZS	Shorter overall length type*3				○	×	×	○	×	×
ZT	Shorter overall length type*3				○	×	×	○	×	×
ZBF	Metal stopper with bumper	Retraction stroke end adjuster	●	●	○	×	×	○	×	×
ZBJ		Extension stroke end adjuster	●	●	○	×	×	○	×	×
ZBM	Rubber stopper	Retraction stroke end adjuster	●	●	○	×	×	○	×	×
ZEC		Extension stroke end adjuster	●	●	○	×	×	○	×	×
ZEJ	Shock absorber/RJ	Retraction stroke end adjuster	●	●	○	×	×	○	×	×
ZEM		Extension stroke end adjuster	●	●	○	×	×	○	×	×
ZHC	Metal stopper	Retraction stroke end adjuster	●	●	○	×	×	○	×	×
ZHF		Extension stroke end adjuster	●	●	○	×	×	○	×	×
ZHM	Metal stopper	Retraction stroke end adjuster	●	●	○	×	×	○	×	×
ZLC		Extension stroke end adjuster	●	●	○	×	×	○	×	×
ZLF	Rubber stopper	Retraction stroke end adjuster	●	●	○	×	×	○	×	×
ZLJ		Extension stroke end adjuster	●	●	○	×	×	○	×	×

- \*1 ●: Shipped together with the product, but not assembled. Without any symbol for the adjuster mounting position: The adjuster can be mounted afterward.
- \*2 For the buffer mechanism, the buffer stroke will be shorter for the stroke that is adjusted by the extension stroke end adjuster.
- \*3 Extension stroke end adjuster mounting holes have been removed to reduce the total length of the table.
- \*4 The shorter total length type can be used, but a retraction stroke end adjuster cannot be mounted afterward.
- \*5 There is no piping port on the side surface of the product.
- \*6 As there is no magnet in the buffer mechanism, auto switches cannot be used on the buffer part.

#### Adjuster Mounting Position



- \* When the shock absorber, metal stopper with bumper, or adjuster option with metal stopper is used, metal-to-metal collisions occur, and may generate dust particles.
- \* When the buffer mechanism or the end lock mechanism functional options are used, dust particles may be generated by the buffer part as well as the end lock part.

\* The 25A- series specifications and dimensions are the same as those of the standard model.

For details, refer to the [Web Catalog](#).

# Air Slide Table

## Height Interchangeable Type

# 25A-MXQ Series

∅6, ∅8, ∅12, ∅16, ∅20, ∅25

RoHS

### How to Order

25A - MXQ 12   - 30 ZA   - M9BW  

Series compatible with secondary batteries

**1** **2** **3** **4** **5** **6** **7**



1 Bore size	2 Body option		3 Standard stroke [mm]
	Standard type	Symmetric type	
	Nil	L	
6			10, 20, 30, 40, 50
8			10, 20, 30, 40, 50, 75
12			10, 20, 30, 40, 50, 75, 100
16		—*1	10, 20, 30, 40, 50, 75, 100, 125
20		—*1	10, 20, 30, 40, 50, 75, 100, 125, 150
25		—*1	10, 20, 30, 40, 50, 75, 100, 125, 150

\*1 Not available, as the standard model has piping ports and auto switch mounting grooves on both sides. Please use the standard type.

### 5 Functional options

Symbol	Functional option
Nil	Without functional option
1	With buffer
2	With end lock
3	Axial piping
4	With buffer, end lock
5	With buffer, axial piping

### 7 Number of auto switches

Symbol	Number of auto switches
Nil	2
S	1
n	n

### 6 Auto switch

Symbol	Auto switch
Nil	Without auto switch (Built-in magnet)

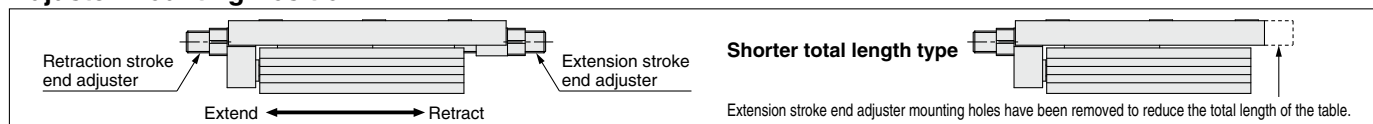
\* Click here for details on applicable auto switch models.

### 4 Adjuster options/Functional option combinations

Symbol	Adjuster type*6	Adjuster mounting position*1		Functional option combination					
		Extension stroke end	Retraction stroke end	Nil	1	2	3	4	5
				Without functional option	*2*7 With buffer	With end lock	Axial piping *5	*2*7 With buffer, end lock	*2*5*7 With buffer, axial piping
Z	Without adjuster			○	○	○	○	○	○
ZA		●	●	○	×	×	○	×	×
ZB	Metal stopper with bumper	●		○	×	○	○	×	×
ZC			●	○	×	×	○	×	×
ZD	Rubber stopper	●	●	○	×	×	○	×	×
ZE		●		○	○	○	○	○	○
ZF			●	○	×	×	○	×	×
ZG		●	●	○	×	×	○	×	×
ZH	Shock absorber/RJ	●		○	×	○	○	×	×
ZJ			●	○	×	×	○	×	×
ZK		●	●	○	×	×	○	×	×
ZL	Metal stopper	●		○	○	○	○	○	○
ZM			●	○	×	×	○	×	×
ZN				○	○*4	×	○	×	○*4
ZP	Shorter total length type*3			●	○	×	○	×	×
ZQ				●	○	×	○	×	×
ZS				●	○	×	○	×	×
ZT				●	○	×	○	×	×
ZBF	Metal stopper with bumper	Retraction stroke end adjuster	Rubber stopper	●	●	○	×	○	×
ZBJ			Shock absorber/RJ	●	●	○	×	○	×
ZBM	Rubber stopper	Retraction stroke end adjuster	Metal stopper	●	●	○	×	○	×
ZEC			Metal stopper with bumper	●	●	○	×	○	×
ZEJ	Shock absorber/RJ	Retraction stroke end adjuster	Shock absorber/RJ	●	●	○	×	○	×
ZEM			Metal stopper	●	●	○	×	○	×
ZHC	Metal stopper	Retraction stroke end adjuster	Metal stopper with bumper	●	●	○	×	○	×
ZHF			Rubber stopper	●	●	○	×	○	×
ZHM		Retraction stroke end adjuster	Metal stopper	●	●	○	×	○	×
ZLC			Metal stopper with bumper	●	●	○	×	○	×
ZLF		Retraction stroke end adjuster	Rubber stopper	●	●	○	×	○	×
ZLJ			Shock absorber/RJ	●	●	○	×	○	×

- \*1 ●: Shipped together with the product, but not assembled. Without any symbol for the adjuster mounting position: The adjuster can be mounted afterward.
- \*2 For the buffer mechanism, the buffer stroke will be shorter for the stroke that is adjusted by the extension stroke end adjuster.
- \*3 Extension stroke end adjuster mounting holes have been removed to reduce the total length of the table.
- \*4 The shorter total length type can be used, but a retraction stroke end adjuster cannot be mounted afterward.
- \*5 There is no piping port on the side surface of the product.
- \*6 The metal stopper with bumper option is not available for ∅6.
- \*7 As there is no magnet in the buffer mechanism, auto switches cannot be used on the buffer part.

### Adjuster Mounting Position



- \* When the shock absorber, metal stopper with bumper, or adjuster option with metal stopper is used, metal-to-metal collisions occur, and may generate dust particles.
- \* When the buffer mechanism or the end lock mechanism functional options are used, dust particles may be generated by the buffer part as well as the end lock part.

\* The 25A-series specifications and dimensions are the same as those of the standard model.

For details, refer to the [Web Catalog](#).

# Air Slide Table



# 25A-MXQ Series

ø6, ø8, ø12, ø16, ø20, ø25



## How to Order

25A-MXQ 16 [ ] [ ] - 50 AS - M9BW [ ] - [ ]

- Series compatible with secondary batteries

### Port thread type

Nil	M thread	ø6 to ø16
	Rc	ø20, ø25
TN	NPT	
TF	G	

### Symmetric type

Nil	Standard type
L	Symmetric type

### Bore size (Standard stroke [mm])

6	10, 20, 30, 40, 50
8	10, 20, 30, 40, 50, 75
12	10, 20, 30, 40, 50, 75, 100
16	10, 20, 30, 40, 50, 75, 100, 125
20	10, 20, 30, 40, 50, 75, 100, 125, 150
25	10, 20, 30, 40, 50, 75, 100, 125, 150

### Made to Order

Nil	None
-X2578	Adjuster side mounting type*1

\*1 The type with a shock absorber is only available for bore sizes ø8, ø12, and ø16.

### Number of auto switches

Nil	2
S	1
n	n

### Auto switch

Nil	Without auto switch (Built-in magnet)
-----	---------------------------------------

\* [Click here](#) for details on applicable auto switch models.

### Adjuster option

Nil	Without adjuster
AS	Extension end rubber stopper
AT	Retraction end rubber stopper
A	Both ends rubber stopper
BS	Extension end absorber
BT	Retraction end absorber
B	Double absorber
CS	Extension end metal stopper
CT	Retraction end metal stopper
C	Double metal stopper
ASBT	Extension end adjuster + Retraction end absorber
ASCT	Extension end adjuster + Retraction end metal stopper
BSAT	Extension end absorber + Retraction end adjuster
BSCT	Extension end absorber + Retraction end metal stopper
CSAT	Extension end metal stopper + Retraction end adjuster
CSBT	Extension end metal stopper + Retraction end absorber

\* With shock absorber is not available in the 25A-MXQ6 series.

\* When the adjuster option with shock absorber or metal stopper is used, metal-to-metal collisions occur, and may generate dust particles.

\* The 25A- series specifications and dimensions are the same as those of the standard model.

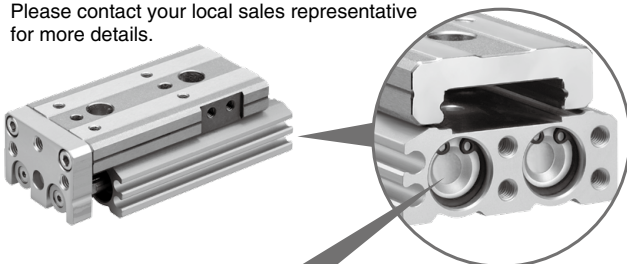
For details, refer to the [Web Catalog](#).

## Corrosion Resistant Air Slide Table

(Made to order: 25A-MXQ□-X771)

The material of the head cap part has been changed to a highly corrosion-resistant material.

Please contact your local sales representative for more details.



	After change	Before change
Head cap	Aluminum	Synthetic resin

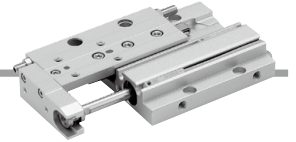
# Low Profile Slide Table

# 25A-MXF Series

ø8, ø12, ø16, ø20



## How to Order



**25A - MXF 12 - 50 - M9BW**  

Series compatible with secondary batteries

Bore size/  
Stroke (mm)

ø8	10, 20, 30
ø12	20, 30, 50
ø16	30, 50, 75
ø20	30, 50, 75, 100

Number of auto switches

Nil	2
S	1
n	n

Auto switch

Nil	Without auto switch (Built-in magnet)
-----	---------------------------------------

\* [Click here](#) for details on applicable auto switch models.

\* The 25A- series specifications and dimensions are the same as those of the standard model.

For details, refer to the [Web Catalog](#).

# Air Slide Table



# 25A-MXW Series

ø8, ø12, ø16, ø20, ø25



## How to Order

25A – MXW 16 [ ] – 100 B – M9BW [ ]

Series compatible with secondary batteries

### Port thread type

Nil	M thread	ø8 to ø16
	Rc	
TN	NPT	ø20, ø25
TF	G	

### Number of auto switches

Nil	2
S	1
n	n

### Auto switch

Nil	Without auto switch (Built-in magnet)
-----	---------------------------------------

\* [Click here](#) for details on applicable auto switch models.

### Bore size (Standard stroke [mm])

8	25, 50, 75, 100, 125, 150
12	50, 75, 100, 125, 150
16	75, 100, 125, 150, 175, 200
20	100, 125, 150, 175, 200, 225, 250
25	100, 125, 150, 175, 200, 225, 250, 275, 300

### Option

Nil	Standard (With urethane bumper)
B	With shock absorbers 2 pcs.

\* When the adjuster option with shock absorber is used, metal-to-metal collisions occur, and may generate dust particles.

\* The 25A- series specifications and dimensions are the same as those of the standard model.

For details, refer to the [Web Catalog](#).

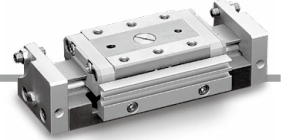
# Air Slide Table

# 25A-MXP Series

ø6, ø8, ø10, ø12, ø16



## How to Order



**25A - MXP** **12** - **15**   - **M9BW**

Series compatible with secondary batteries

Bore size (Standard stroke [mm])

<b>6</b>	5, 10
<b>8</b>	10, 20
<b>10</b>	10, 20
<b>12</b>	15, 25
<b>16</b>	20, 30

Adjuster option

<b>Nil</b>	Rubber stopper
<b>B</b>	Shock absorber
<b>C</b>	Metal stopper

Number of auto switches

<b>Nil</b>	2
<b>S</b>	1
<b>n</b>	n

\* In the case of 25A-MXP6-5, with 2 auto switches are available for D-M9□ type and D-M9□V type only. For other switches, no other choice is affordable but with 1 piece attached (symbol: S).

Auto switch

<b>Nil</b>	Without auto switch
------------	---------------------

\* [Click here](#) for details on applicable auto switch models.

Magnet/Switch rail

<b>Nil</b>	With magnet and rail
<b>N</b>	Without magnet and rail

\* Auto switch cannot be mounted on type N (without magnet and rail).

- \* Adjuster for 25A-MXP6 series is available for one side only.
- \* Shock absorber is not available in 25A-MXP6 and 25A-MXP8 series.
- \* When the adjuster option with shock absorber or metal stopper is used, metal-to-metal collisions occur, and may generate dust particles.

\* The 25A- series specifications and dimensions are the same as those of the standard model.

For details, refer to the [Web Catalog](#).